

We look forward to welcoming you to Goldthorn Park Reception Class

If you would like any further information please contact
main reception:

School Office: 01902 558730

www.office@goldthorn.org.uk



GOLDTHORN PARK
Primary School

Admissions 2023

Goldthorn Park Reception

Goldthorn Park Primary is a school where all learners are happy, in an environment based on trust and support.

We will settle for nothing less than excellence in our drive for achievement wherever this can be found.



GOLDTHORN PARK
Primary School

Why Goldthorn Park?

Goldthorn Park Early Years Team strive to provide the very best for our children. We pride ourselves in working in collaboration with families and holding an established knowledge of Early Years learning. We provide a wealth of opportunities for our children through all aspects as they begin a new learning Journey with us.

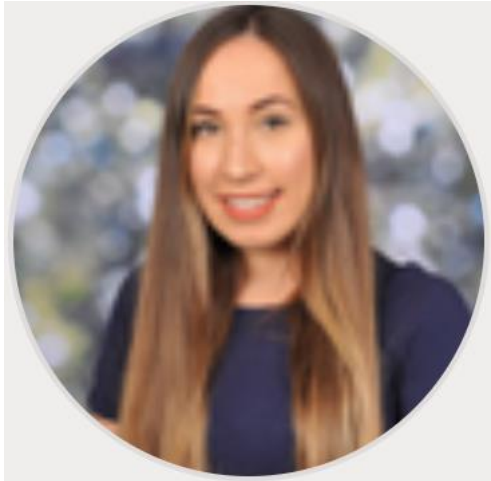
We ensure there is a well planned, balanced and differentiated curriculum within a caring, safe and secure yet enquiring environment.

Miss Allen

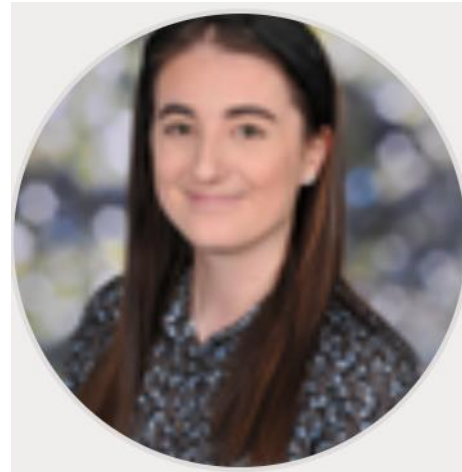
Acting Early Years Phase Leader



Meet the Team



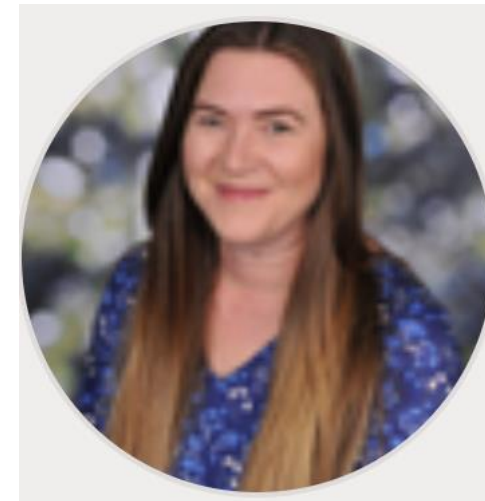
Miss Allen
Class 1 Teacher
Acting Phase Leader



Miss Hill
Class 2 Teacher



Mrs Hammonds
Class 1 Teaching assistant



Mrs Baker
EYFS HLTA



GOLDTHORN PARK
Primary School

Our Environment

The reception environment offers 2 spacious classrooms that are well planned to provide access to learning that supports all areas of the curriculum.

We offer a spacious well equipped learning environment outdoors that allows us to continue our learning through outdoor provision. This environment is purely for our youngest members of our school community and children can explore, investigate and learn through play.

Children have their own cloakroom and toilet facility.



Seven areas of learning

1. Communication and language
2. Physical development
3. Personal, Social and Emotional development
4. Literacy
5. Mathematics
6. Understanding the World
7. Expressive Arts and Design



These are underpinned by the Characteristics of Effective Learning

* Playing and exploring * active learning * creating and thinking critically

Admissions 2023



Admissions into Reception:

- If your child was born between 1/09/2018 and 31/08/2019 you must apply for a place in Reception Year before the 15 January 2023. The online application will go live in November 2022, hard copies of the form will only be made available on request
- For information regarding school admissions please view the [Wolverhampton City council website](#) and [School Admissions Arrangements 2023-2024 : City of Wolverhampton document](#).

Admissions Timeline

- November 2022 - Online admissions applications go live and hard copies are available from the council on request.
- Parents are invited to name up to 5 preferred schools, ranked in order of preference.
- 15th January 2023 23:59 - Application deadline
- 17th April 2023 - Allocation Day
- Parents who made applications online will be able to view their school allocation via the online admissions facility. Admissions will write to every applicant resident in Wolverhampton with notification of their allocated place.
- Parents will be required to respond to Wolverhampton City Council to any offers made within 10 working days.

We look forward to welcoming you to Goldthorn Park Primary School



GOLDTHORN PARK
Primary School

**If you would like any further information please contact main
reception:**

School Office: 01902 558730

School Office Email: office@Goldthorn.org.uk

Website: <http://www.goldthornpark.org.uk/>